

CASIO®



Go on a 10-day trip!

Carrying the new EXILIM that records up to 1,000 images on a single charge! *1



**POWERFUL
SUPER
LIFE
BATTERY**

One Charge
1000
images



10x
Optical
Zoom

24mm^{*2}
Wide-angle
Lens

**Dynamic
Photo**

The new, thin, lightweight, 10x Optical Zoom Digital Camera with 24mm^{*2} Wide-angle Lens

NEW H10

*1. Approximate; CIPA standards. Normal screen brightness (based on CASIO data) *2. Converted to 35mm film format.

EXILIM

Hi-ZOOM

www.exilim.com

1,000 images*¹ on a single charge!

Perfect for a 10-day trip!



The new, thin, 10x Optical Zoom Digital Camera!

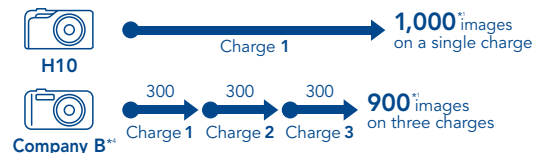


H10

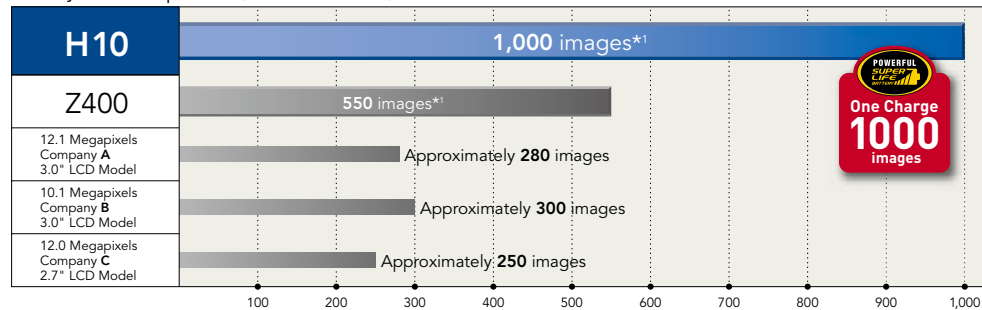
- EXILIM Engine 4.0
- 12.1 Megapixels
- 10x Optical Zoom
- 24mm^{W2} Wide-angle Lens
- 3.0" Large LCD
- 1000^{H1} Battery Life
- 38 BEST SHOT
- YouTube CAPTURE MODE

Amazing battery life delivers 1,000 images*¹ on a single charge!

EXILIM original battery technology delivers battery life that's heads-and-shoulders above the rest. A single charge provides enough power to shoot 1,000 images*¹, which is plenty to keep you shooting for a 10-day trip*³ without recharging. That is also enough for about 11 hours of continuous image playback.



Battery Life Comparison (CIPA Standards)



CIPA Standards
The Camera and Imaging Products Association (CIPA) defines various standards for measuring camera performance, including battery life. These standards help to standardize the battery life values reported in the catalogs and user documentation of different manufacturers, which helps users to better compare different products against each other. * Values measured in accordance with CIPA standards do not guarantee such values during actual use. • CIPA Standard Battery Life Measurement Conditions: Normal temperature (23°C); unused primary or fully charged secondary battery; monitor on; zoom operation between full wide and full telephoto every 30 seconds; during which two images are recorded with flash; power turned off and back on every time 10 images are recorded. Battery life is time it takes for the power supply to shut down for the first time as recording is repeated under the above conditions. • As a general rule, factory default camera setup is used.

*1. Approximate, based on CIPA standards. Normal screen brightness (based on CASIO data) *2. Converted to 35mm film format. *3. Based on 100 snapshots per day, calculated according to CIPA standards (based on CASIO data). *4. 10.1 megapixels, 3.0" LCD model
• Screen and printed images shown in this catalog are simulations for explanatory purposes only. Appearance of actual images may be different from that shown here.

Advanced technology in a compact configuration.
Dynamic landscapes and portraits with the touch of a button.



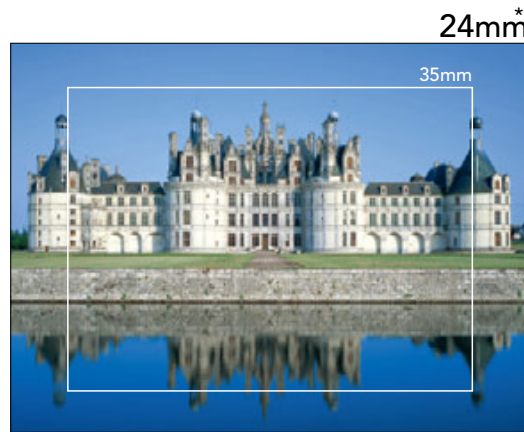
The new, thin, lightweight, 10x Optical Zoom Digital Camera with 24mm*1 Wide-angle Lens

24mm*1 Wide-angle Lens for more dynamic images

A 24mm*1 wide-angle lens gives you the tools to make images of your special trips more exciting and dynamic. The wide range of the lens also lets you shoot intimate indoor shots as well.



A pretty good shot, but one that does not capture the full expanse of the scene before you.



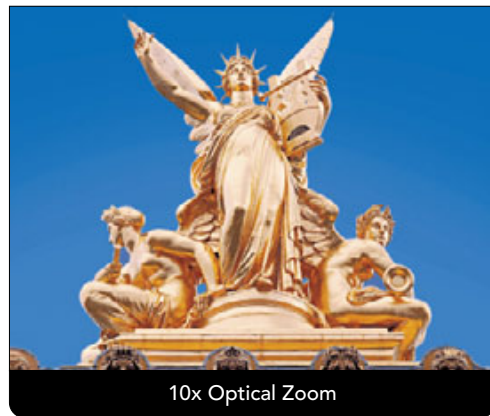
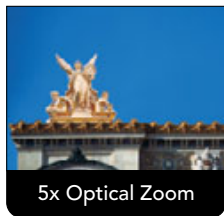
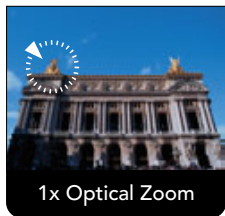
A 24mm*1 wide-angle lens captures the breadth and depth of the scene to create images that faithfully record your experiences.

10x Optical Zoom for detailed close-ups of faraway subjects

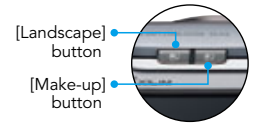
10x optical zoom takes you up close to distant subjects for intimate shots. CCD Shift Stabilization minimizes the effects of camera movement for beautiful zoom images every time.

Approximate HD (No Deterioration) Zoom Factors

- 8M Size:12.3x • 5M Size:15.6x
- 3M Size:19.5x • VGA:62.4x



Dedicated buttons for enhanced landscape and portrait shots



Landscape Effect

Vivid Landscape

The landscape feature is made possible by amazing high-speed image analysis that allows enhancement only of the hues of an image registered by the human brain. The result is colors that are more vivid and striking, and landscape images that were not possible using the simple saturation techniques of the past.



Mist Removal

After performing high-speed image analysis, the camera adjusts contrast to eliminate the effects of mist that sometimes ruins those once-in-a-lifetime travel shots. The result is a clear image that appears as if it was shot under clear conditions.



Make-up Mode

Select one of 12 Make-up Levels that enhance human skin tones for beautiful portraits, even when printed at high resolutions.



*1. Converted to 35mm film format.

• Screen and printed images shown in this catalog are simulations for explanatory purposes only. Appearance of actual images may be different from that shown here.

Normally difficult night scenes and backlit scenes with a press of the shutter button.



Beautiful handheld night scenes

Automatic optimization of faces and background brightness combines with anti-shake for perfect night scenes, even when you are holding the camera by hand. The camera also filters out digital noise that tends to appear in night scenes at high sensitivity settings.



The subject is bright, but the background is too dark.



Camera movement results in image blur.



Simply press the shutter button for an image with a bright subject and background, and minimal image blur.

Point-and-shoot backlit images

The camera can be configured to shoot backlight images with a perfect balance between facial and background exposure. Sky tones also come out in all their natural beauty.



The sky looks good, but the faces are underexposed.



The faces look good, but the sky is overexposed.



Simply press the shutter for perfectly exposed faces and sky, and a naturally beautiful image.

AUTO BEST SHOT

Automatic selection of the BEST SHOT scene that suits shooting conditions. Then all you need to do is press the shutter button for perfect images every time!

Portrait



Scenery



Night Scene



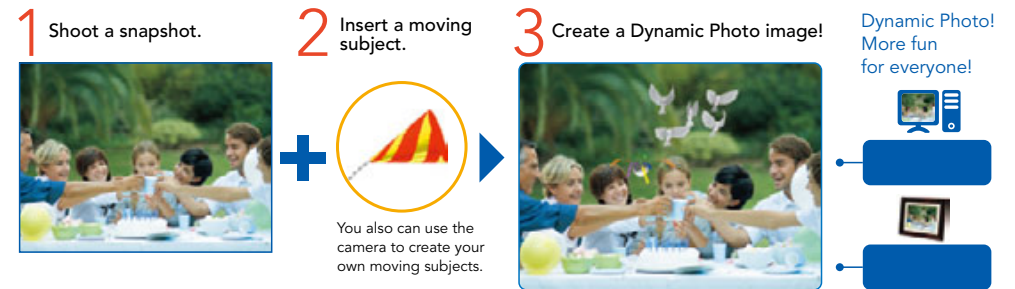
• Night Scene Portrait • Flower (Macro) • Sports (Movement)

Dynamic Photo

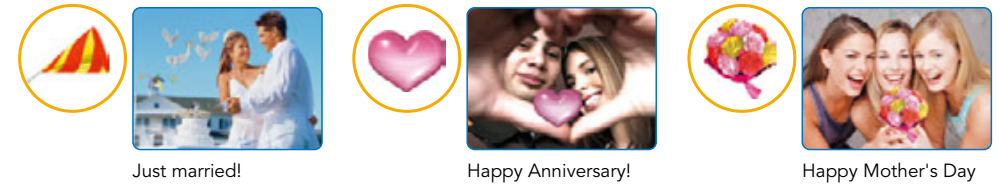
Dynamic Photo makes digital photography more enjoyable in ways you never before imagined possible!



Download moving subjects on the Internet! | <http://www.exilim.com/dp/>



Comes with eight moving subjects you can use to create animated greeting cards.



Fully adjustable inserted subject size.

Camera includes a function that converts Dynamic Photo images to movies.

Insert moving subjects into background images you have on your computer or that you downloaded from the Internet.*

*Requires use of Photo Transport software that comes with the camera.

Versatile Functions

■ CCD Shift Stabilization ■ Anti Shake DSP ■ Auto Shutter ■ Super Clear LCD ■ Face Detection

• Screen and printed images shown in this catalog are simulations for explanatory purposes only. Appearance of actual images may be different from that shown here.

EX-H10 Main Specifications	
Monitor Screen	3.0-inch TFT color LCD / 230,400 dots (960 x 240)
File Format	<ul style="list-style-type: none"> • Snapshots: JPEG (Exif Ver. 2.2), DCF 1.0 standard, DPOF compliant • Audio (Voice Recording): WAV (monaural)
Recording Media	35.7 MB*1 built-in flash memory, SD Memory Card, SDHC Memory Card
Number of Recorded Pixels (Snapshots)	4,000 x 3,000 / 4,000 x 2,656 (3:2) / 4,000 x 2,240 (16:9) / 3,264 x 2,448 / 2,560 x 1,920 / 2,048 x 1,536 / 640 x 480 (VGA)
Number of Effective Pixels	Approximately 12.1 megapixels
Image Sensor	1/2.3-inch square pixel CCD (Total pixels: 12.39 megapixels)
Lens / Focal Length	11 lenses in 10 groups, including aspherical lens; F3.2 (W) to F5.7 (T) (Approximately 24 to 240 mm equivalent to 35 mm film)
Zoom	10x Optical Zoom, 4x Digital Zoom, maximum 62.4x HD zoom (with VGA size)
Focus	<ul style="list-style-type: none"> • Type: Contrast Detection Auto Focus • Mode: Auto Focus, Macro, Infinity, Manual Focus • AF Area: Spot, 9-point multi, Auto Tracking • Focus Lock • Quick Shutter • AF Assist Light
Approximate Focus Range*1 (Snapshots)	Auto Focus: 15 cm to ∞ (W) / Macro: 7 cm to 50 cm*2 From lens surface.
Exposure	<ul style="list-style-type: none"> • Metering: Multi pattern, Center Weighted, Spot by CCD • Control: Program AE • Compensation: -2 EV to +2 EV (in 1/3 EV steps)
Aperture*4	F3.2 (W) to F7.5 (W) (With ND filter.)
Recording Functions	Dynamic Photo, Landscape Effect, Make-up Mode, Auto Shutter, Face Detection, Continuous Shutter (Normal-speed, 4 fps, 10 fps, Flash), Auto Macro, BEST SHOT, AUTO BEST SHOT, Snapshot In Movie, Voice Recording
Shutter Type / Shutter Speed*5	CCD shutter, mechanical shutter <ul style="list-style-type: none"> • Auto (Program AE): 1/2 to 1/2000 second • Night Scene: 4 seconds maximum
White Balance	Auto, Daylight, Overcast, Shade, Day White Fluorescent, Daylight Fluorescent, Tungsten, Manual White Balance
Sensitivity (SOS / REI)*6	Auto, ISO64, ISO100, ISO200, ISO400, ISO800, ISO1600, ISO3200
Self-timer	10 seconds or 2 seconds, Triple Self-timer
Built-in Flash*3	<ul style="list-style-type: none"> • Flash Modes: Auto, Flash off, Flash on, Soft Flash, Red Eye Reduction • Approximate Flash Range Normal: 0.2 to 3.6 m (W) / 0.5 to 2.0 m (T) Flash Continuous Shutter: 0.4 to 1.9 m (W) / 0.5 to 1.0 m (T) From lens surface. ISO sensitivity: "Auto"
Playback Functions	Playback Zoom (8x), Multi-image Display, Calendar Screen, Red Eye Correction, Image Rotation, Resize, Trimming, Keystone Correction, Color Restoration, Slideshow, Layout Print
Timekeeping Functions	Date and time (Current date and time are stored with image data), Auto calendar up to 2049, Timestamp
Movie File Formats	AVI format, Motion JPEG, IMA-ADPCM (monaural)
Other	Selectable Focus Frame, Key Customization, Monitor Screen Brightness Adjustment, PictBridge, Video Output (NTSC / PAL), Wide-screen TV Output (NTSC / PAL)
Input / Output Terminals	USB (Hi-Speed USB compatible) / AV (NTSC / PAL compliant) connector
Power Source	Rechargeable Lithium Ion Battery (NP-90)
Dimensions*7	102.5 (W) x 62 (H) x 24.3 (D) mm (22.1 mm at thinnest point)
Weight*8	Approximately 164 g
Bundled Accessories	Rechargeable Lithium Ion Battery (NP-90), Battery Charger (BC-90L), AC Power Cord, Special USB Cable, Special AV Cable, Strap, CD-ROM

*1. Built-in memory capacity after formatting. *2. Full wide angle, 1-step zoom. *3. Optical zoom changes range. *4. Optical zoom changes aperture value. *5. Depends on camera setup. *6. SOS: Standard Output Sensitivity, REI: Recommended Exposure Index. *7. Excluding projections. *8. Excluding battery and bundled accessories.

Memory Capacity File Size (Variable), Movie Recording Time

All table values are approximate maximum values for the H10 camera. See the "Snapshot Sizes" item in the "Main Specifications" on this page for available image size settings.

• Snapshots

Image Size (Pixels)	Image Quality	Image File Size	SD Memory Card (1GB) Capacity (Shots)
4,000x3,000 (12M)	Fine	7.87MB	122
	Normal	4.13MB	234
	Economy	2.76MB	350

• Movies Each movie can be up to 10 minutes long.

	HD 1280 x 720	STD 640 x 480	LP 320 x 240
Approximate Data Rate (Frame Rate)	24 M bits/second (24 frames/second)	10 M bits/second (30 frames/second)	2.7 M bits/second (15 frames/second)
SD Memory Card (1GB) Capacity	5 minutes, 27 seconds	13 minutes, 10 seconds	49 minutes, 36 seconds

Included PC Software and System Requirements

Windows® / Windows Vista®	2000	XP	Vista
Photo Transport	●	●	●
YouTube™ Uploader for CASIO	● (SP4)	● (SP2, SP3)	●

Operating Systems for Movie Playback

AVI (Motion JPEG)

- Windows® 2000 / XP, Windows Vista®

Recommended Environment	CPU: Pentium 4.3GHz or higher Required Software: Windows Media Player, DirectX® 9.0C or higher
-------------------------	---

- Mac OS® X

Recommended Environment	OS 10.3.9 or higher Required Software: QuickTime® 7 or higher
-------------------------	--

Computer Connection Environment

Operates on connection of USB cable using the operating system's standard USB driver. Software installation not required. Windows 2000/XP/Vista/Macintosh OS9/OS X (10.1, 10.2, 10.3, 10.4, 10.5)

* This product's YouTube upload functionality is included under license from YouTube LLC. The presence of YouTube upload functionality in this product is not an endorsement or recommendation of the product by YouTube LLC.

Important! The above are recommended system environments. Configuring one of these environments does not guarantee proper operation. Even if your computer meets the minimum requirements described above, certain settings and other installed software may interfere with proper playback of movies.

- ArcSoft and the ArcSoft logo are trademarks or registered trademarks in the United States and other countries. • YouTube and the YouTube logo are trademarks of YouTube LLC.
- Macintosh, Mac OS, QuickTime are registered trademarks of Apple Inc. ©2009 Apple Inc. All rights reserved. • Microsoft, Windows Vista, Windows, DirectX are registered trademarks or trademarks of Microsoft Corporation. ©2009 Microsoft Corporation. All rights reserved. • Other company, product, and service names used herein may also be trademarks or service marks of others.
- PRINT Image Matching for print commands are embedded in the header files of images created by the digital camera. Print commands include color settings and image parameter information. • DCF stands for "Design Rule for Camera File System." • The liquid crystal built into this camera is the product of precision engineering, with a pixel yield of 99.99%. This also means, however that 0.01% of the pixels can be expected to fail to light or to remain lit at all times. • All screens shown in this catalog are photographic images. Actual screens differ from those shown here. • Designs and specifications are subject to change without notice. The printed colors in this catalog may be somewhat different from the colors of the actual product.